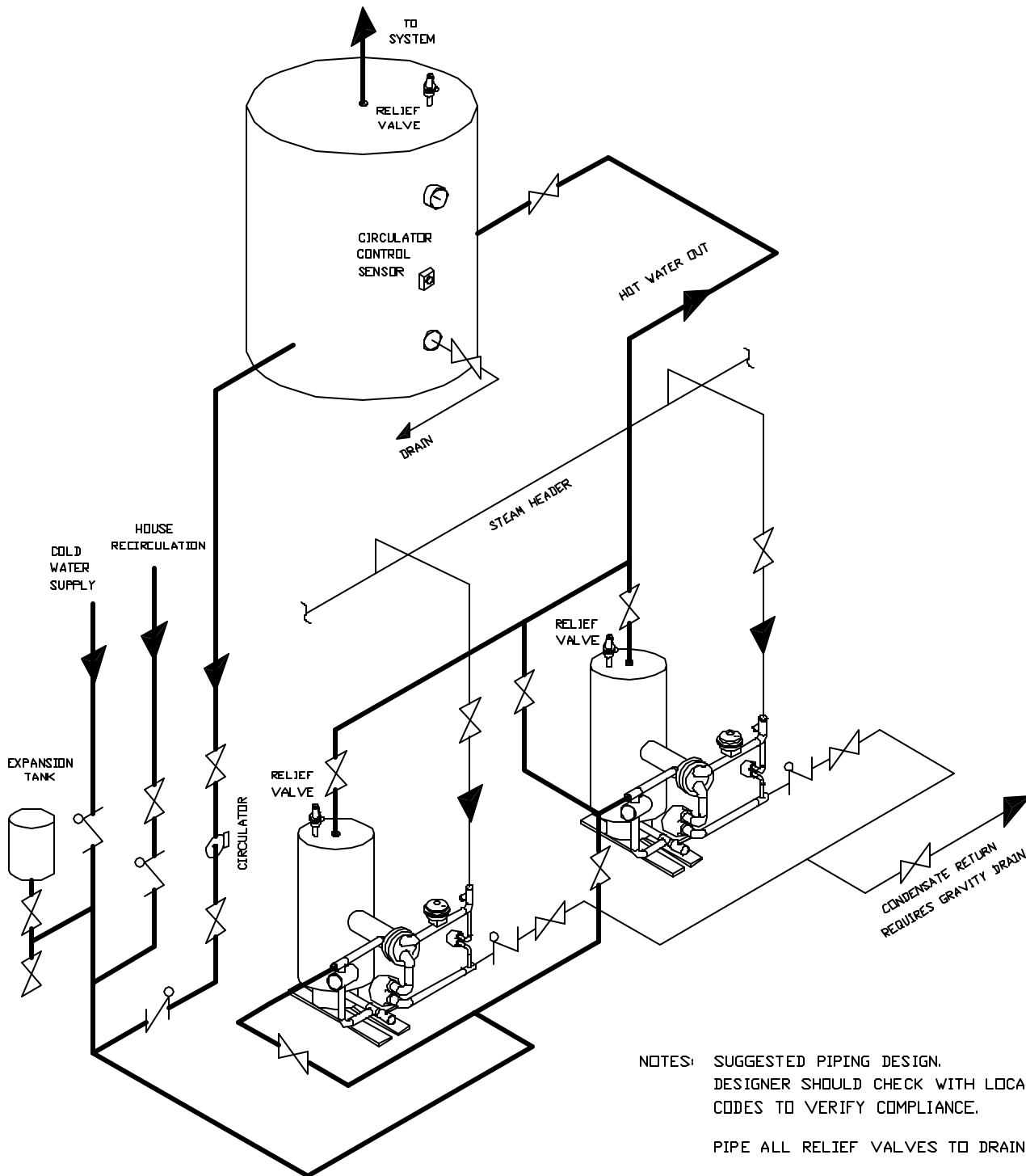




TWO SSH HEATERS
PIPED IN SERIES TO
ONE STORAGE TANK

| | |
|--|-------------|
| | STOP VALVE |
| | CHECK VALVE |
| | CIRCULATOR |



NOTES: SUGGESTED PIPING DESIGN.
DESIGNER SHOULD CHECK WITH LOCAL
CODES TO VERIFY COMPLIANCE.
PIPE ALL RELIEF VALVES TO DRAIN.